

- NOTES:**
- UNLESS SPECIFIED OTHERWISE ALL PIPES TO BE STAINLESS STEEL 316.
 - ALL FLANGES TO BE PLATE FLANGES OR WELDING ACCORDING TO TABLE "2500/3" OF SABS 1123-1977 FROM CH10 TO CH5100 AND 1600/3 OF SABS 1123-1977 FROM CH5100 TO CH9372.
 - NO GALVANIZED PIPES OR PIPE SUPPORT SHALL BE PERMITTED.
 - UNDERGROUND STEEL PIPES AND FITTINGS SHALL BE WRAPPED TIGHTLY IN DENSOL OR EQUIVALENT APPROVED WRAPPING.
 - ALL DIMENSIONS AND LEVELS TO BE CHECKED ON SITE PRIOR TO INSTALLATION. DISCREPANCIES TO BE REFERRED TO ENGINEER.
 - CONTRACTOR SHALL VERIFY ALL PIPE LENGTHS IN ACCORDANCE WITH VALVES AND ACCESSORIES SUBMITTED BY MEANS OF A WORKSHOP DRAWING.
 - ALL DIMENSIONS IN mm.
 - ALL BOLTS, NUTS AND WASHERS TO BE STAINLESS STEEL.
 - ALL THREADS OF BOLTS TO BE TREATED WITH GRAPHITE SPRAY AND NOT NICKEL ANTI-SIEZE COMPOUND.
 - CONCRETE STRENGTH TO BE 25/19.
 - 120 kg/m³ OF REINFORCEMENT TO BE ALLOWED PER m³ OF CONCRETE.
 - INSTALL CALCAMITE STEP IRONS IF CHAMBER DEPTH EXCEEDS 1.4m.
 - AFTER INSTALLATION OF COVER SLAB, ANCHOR SCREW TO BE PLUGGED AND TREATED WITH BITUMEN PUTTY.
 - FOR LIFTING HOOK DETAIL SEE DETAIL A.

- SCHEDULE:**
- 160mmØ FLANGE/SOCKET T16 DUCTILE IRON ADAPTOR, EPOXY COATED (BLUE), [QUANTITY: 2]
 - DOUBLE FLANGED CEMENT MORTAR LINED (INTERNAL AND EXTERNAL) AND SHEATHED STEEL EXTENSION PIECE, [QUANTITY: 2]
 - 150mm BERMAD MODEL WW-06ES-720-Y-C-16-EP-PB-VF PRESSURE REDUCING VALVE (PRV), ES TYPE INCLUDING V-PORT THROTTLING PLUG AND LOW MAINTENANCE CONTROL LOOP, [QUANTITY: 1]
 - 150mm KLAMFLEX DEDICATED FLANGE ADAPTOR, [QUANTITY: 1]



LEGEND:

DETAIL DESIGN

Rev	Date	Description of changes	By
A	16/03/2022	FOR INFORMATION	EW
REVISIONS			

Client

DRDLR: Office of the Regional Land Claims Commissioner: WC
14 Long Street
Cape Town

TEL: +27-21-409-0330

Consultant

Block C, Oxford Gate,
54 Oxford Street,
Durbanville, 7550

P O Box 1142,
Durbanville, 7551

Tel: +27 21 975 1718
Fax: +27 21 976 8495
E-Mail: info@eceng.co.za

APPROVED
THE MASTER HELD AT ELEMENT CONSULTING ENGINEERS BEARS
THE ORIGINAL SIGNATURE OF APPROVAL

SIGNATURE: _____ NAME: _____ DATE: _____

Project

**DISTRICT SIX
REDEVELOPMENT
PHASE 3 - SITE Q**

Project Description

**RESTITUTION HOUSING:
CIVIL SERVICES**

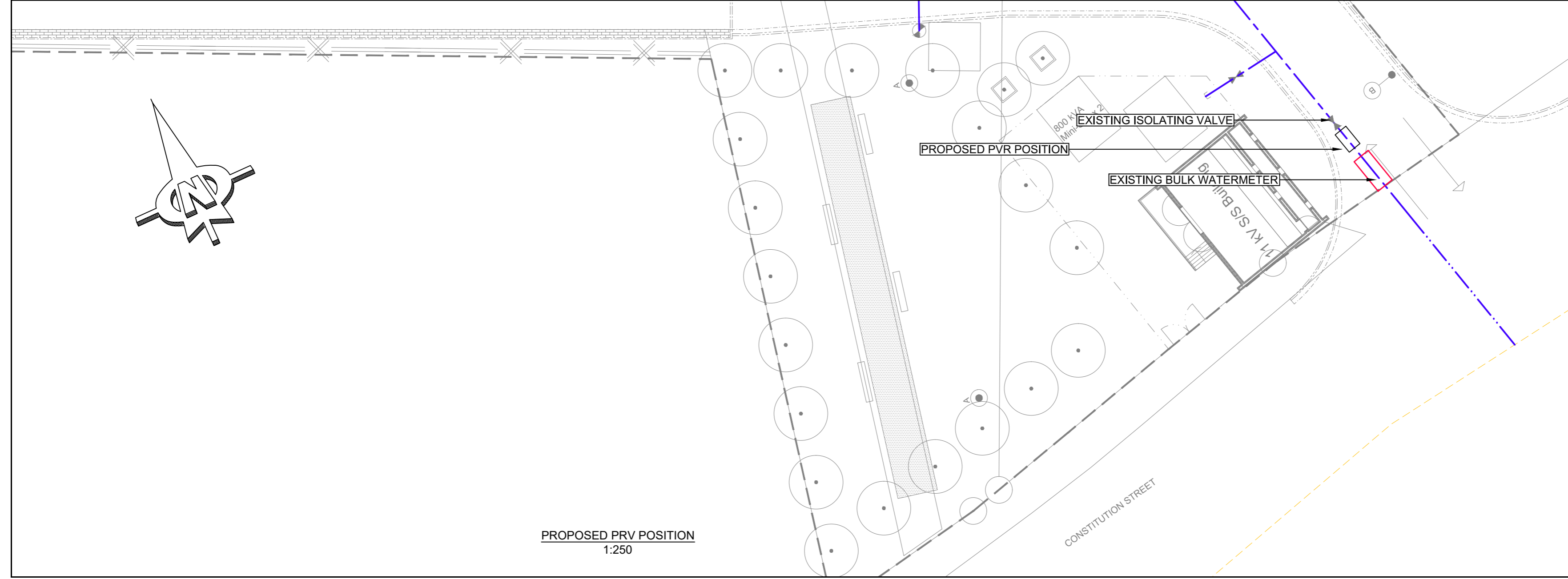
Drawing Title

**PRESSURE REDUCING VALVE (PRV)
AND CHAMBER DETAIL**

Drawing Units		Drawing Size	
Date	Scale	Designed By	
16/03/2022	AS SHOWN (A2)	EW	
Checked By	Drawn By	Approved By	
JS & IO	EW	JS	

Consultant Drawing No. _____

Project Drawing No. **D6P3 CIV_CN_Q0_215**



PROPOSED PRV POSITION
1:250